

EASTERN UNIVERSITY, SRI LANKA
DEPARTMENT OF CHEMISTRY
FIRST YEAR SECOND SEMESTER EXTERNAL DEGREE
EXAMINATION IN SCIENCE –2002/2003
(SEPT/OCT' 2005)

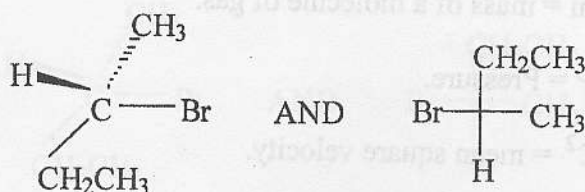
EXTCH 103 STEREOCHEMISTRY AND KINETIC MOLECULAR THEORY

Answer all questions

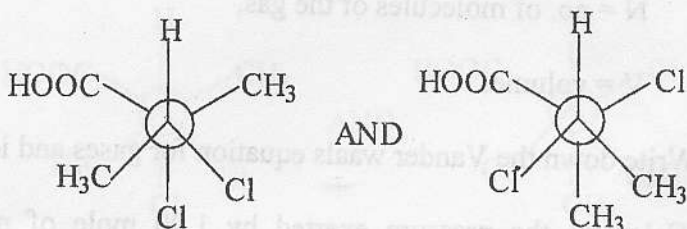
Time: 01 hour

1. a) Indicate whether each of the following pairs of compounds is enantiomers, diastereoisomers, geometrical isomers or identical compounds.

i)



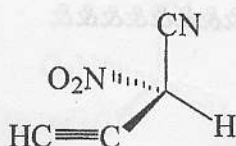
ii)



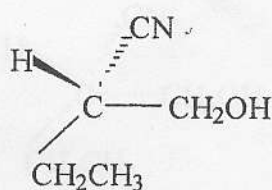
- b) Explain how you could separate a racemic mixture of an alcohol into its pure forms.

- c) Giving reasons specify the configurations of the following molecules as R or S.

i)

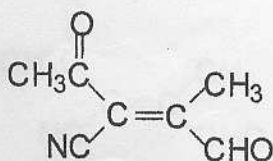


ii)

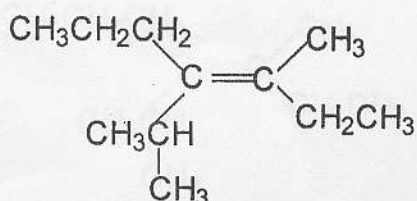


- d) Specify the configuration of the double bonds of the following molecules as E or Z. Explain your answer.

i)



ii)



Contd..

